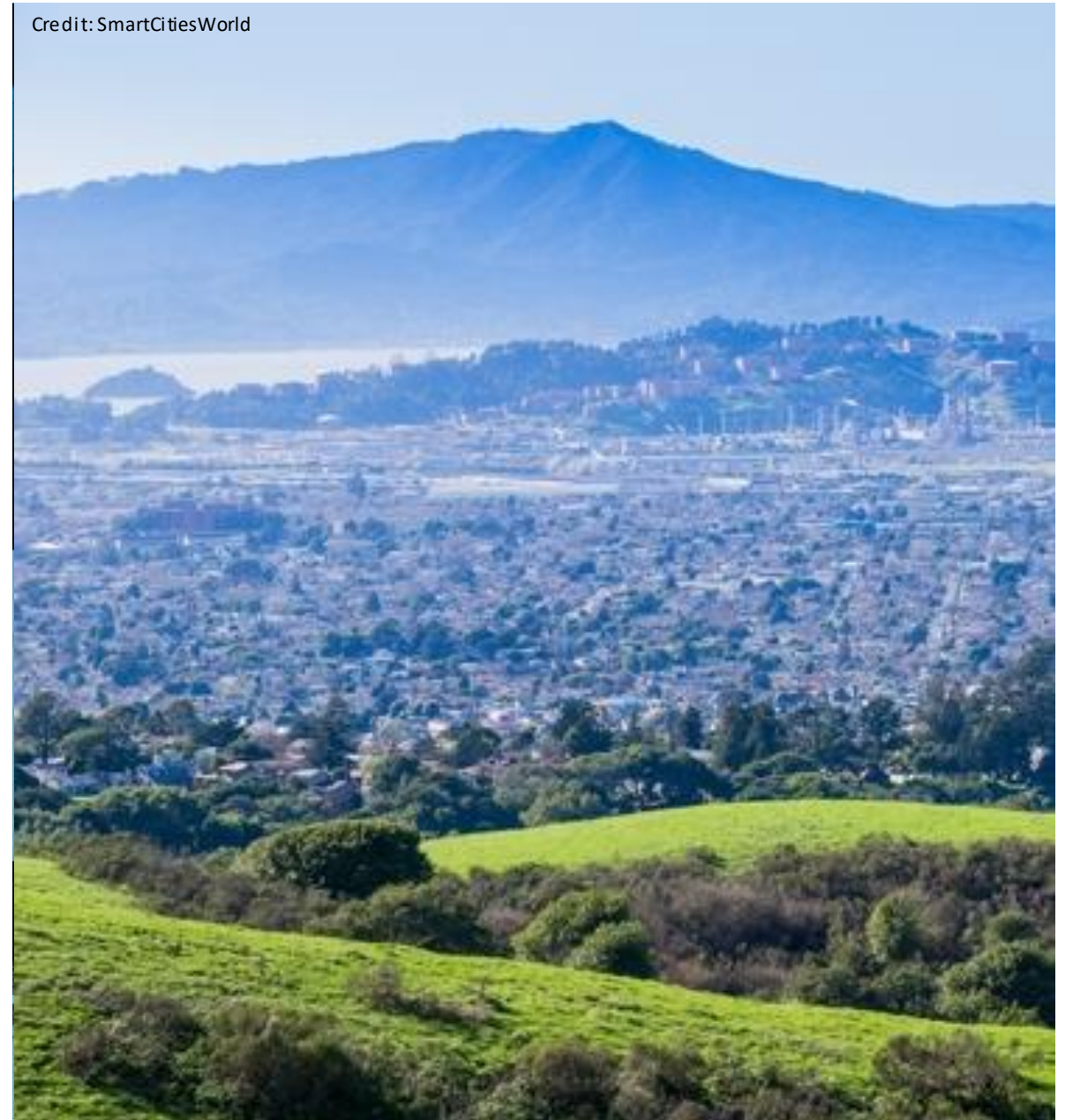




Contra Costa Integrated Transit Plan Progress Update

Planning Committee
April 4, 2024

Credit: SmartCitiesWorld



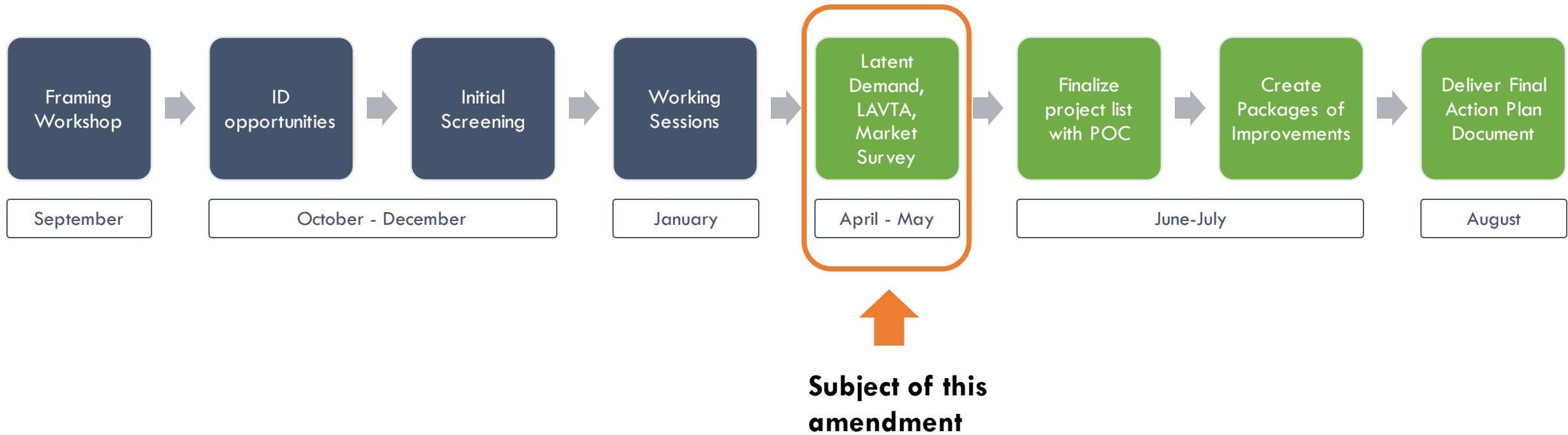
Agenda

- Action Plans Update
- Takeaways from the operator workshops
- Proposed budget amendment



Action Plans Update

Action Plan Roadmap



Project Definitions

Core Transit Network Services

Regional Services



BART, Amtrak, Ferry, and Transbay bus services that connect Contra Costa to important regional destinations

Transit Priority Corridors



Fixed-route bus service on key travel corridors within the county with identifiable branding, infrastructure and service levels

Frequent Bus



Fixed-route bus service on key travel corridors within the county with identifiable service levels

Access-focused Services

Microtransit + Feeders



Fixed-route and on-demand bus services that connect to mobility hubs, rail stations, and park-and-ride lots for connection to rail and core bus network.

Car Share



For-profit service that rents vehicles for short increments time; supports car-lite and car-free lifestyle

Active Trans + Micromobility



Bicycle, scooter, and pedestrian improvements that help riders connect to mobility hubs, rail stations, and park-and-ride lots

Mobility Hubs



Key locations where transportation services connect allowing easy transfer for users; includes off-street infrastructure and wayfinding.

Autonomous Transit Network (ATN)

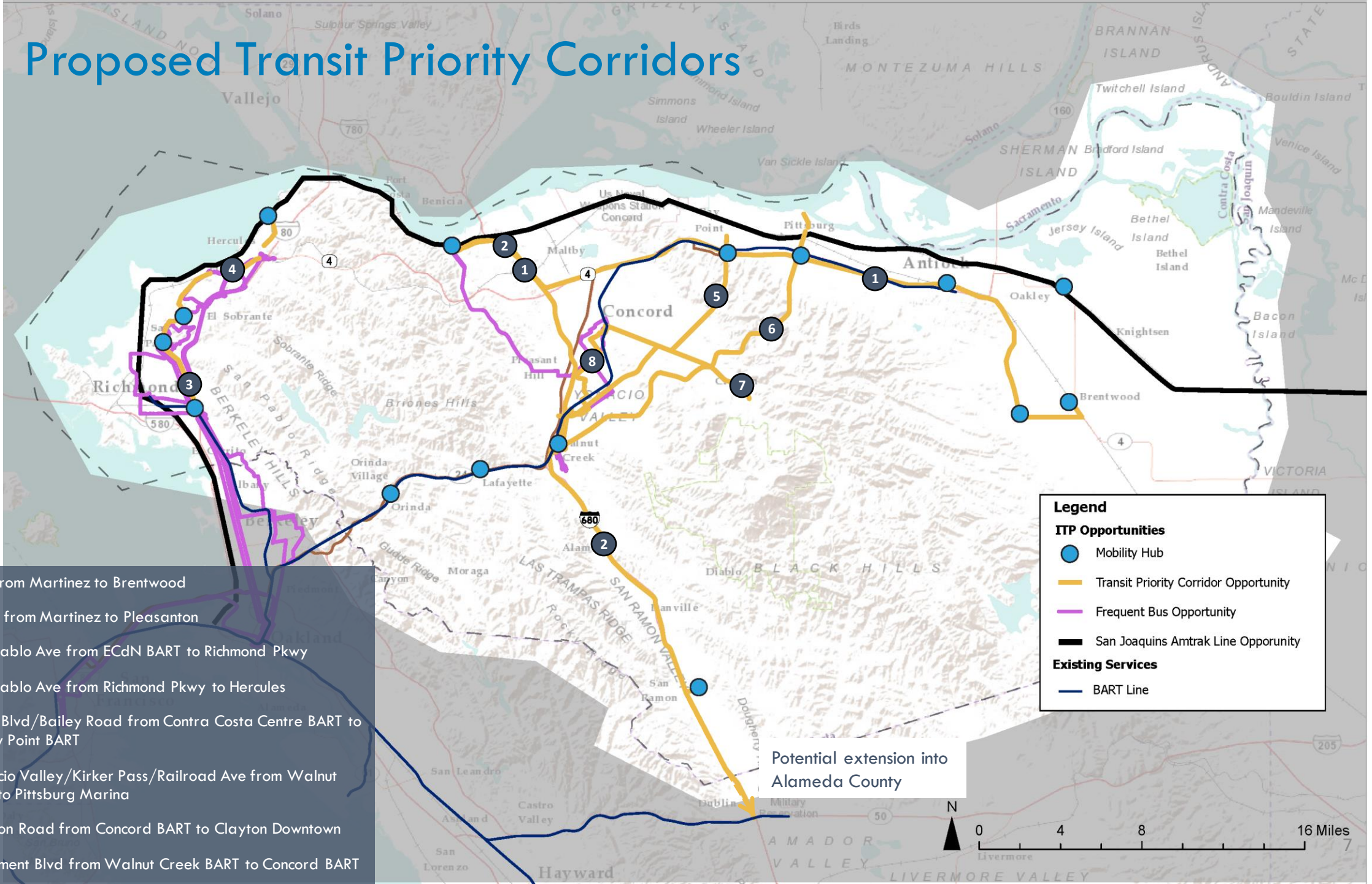


On-demand service operating on a fixed guideway that connects to mobility hubs, rail stations, and park-and-ride lots for connection to rail and core bus network.

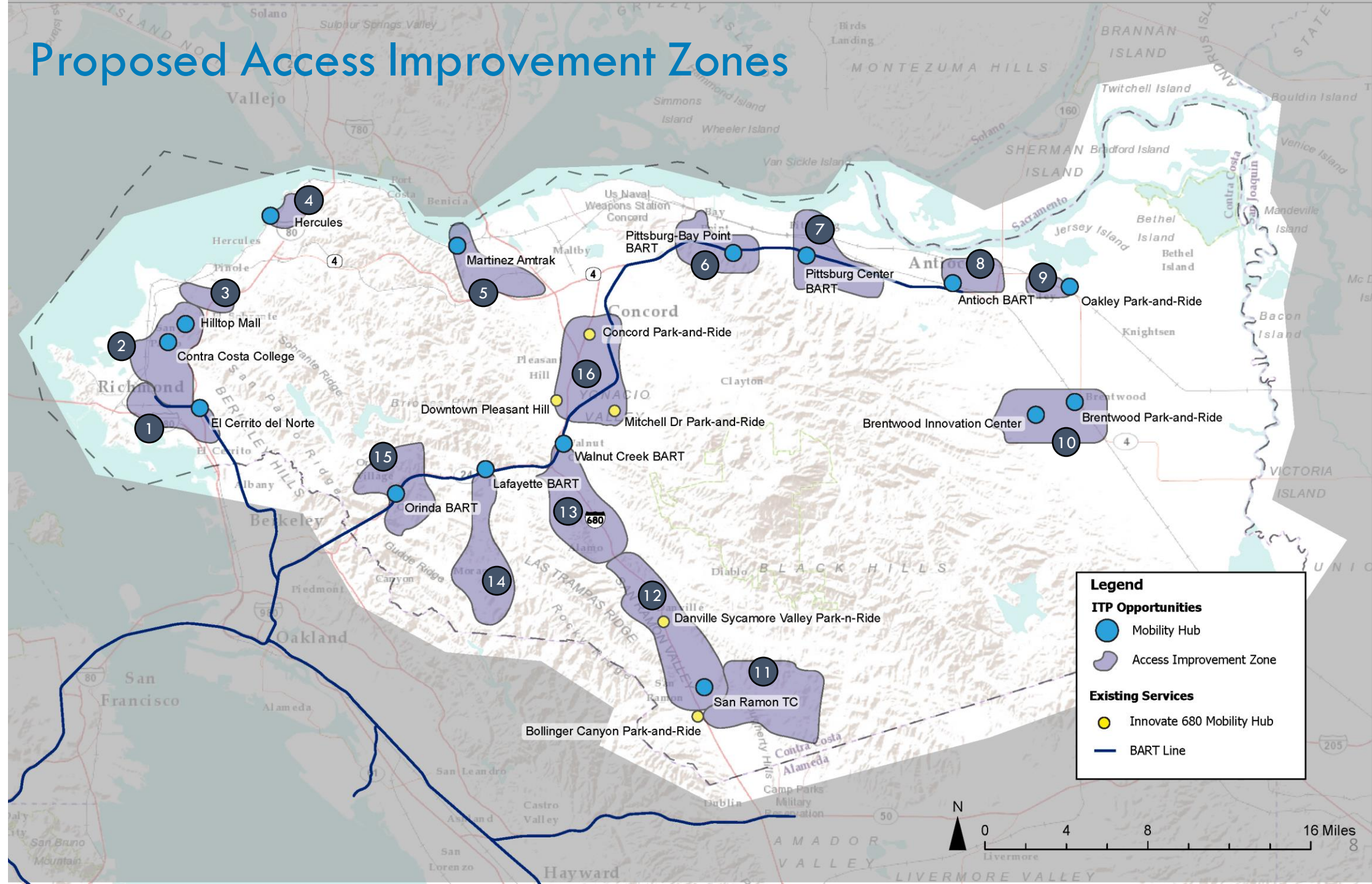
Project Definitions

Category	Trip Type	Proposed Improvement
Regional Services (Rail, Ferry, Transbay Bus)	Regional	Assumed service levels
Transit Priority Corridors	Regional + Local	Service + Infrastructure
Frequent Bus	Local	Service
Microtransit + Station Feeders	Access to Core Transit Network	Service
Active Transportation + Micromobility	Access to Core Transit Network	Service or Infrastructure
Autonomous Transit Network (ATN)	Access to Core Transit Network	Service + Infrastructure
Mobility Hubs	Connection Points Between Services	Infrastructure

Proposed Transit Priority Corridors



Proposed Access Improvement Zones



Operator Workshops

What We Got Out of the Workshops

- Clearer definitions for elements we are including in Action Plans
- Updates to Transit Priority Corridors based on operator knowledge of markets
- Updates to access improvement zones
 - Potential emerging mobility where it complements and doesn't replace existing bus service
 - Adjustments to mobility hub locations

Proposed Budget Amendment

Additions to Scope

- Latent Demand Analysis
- Inclusion of LAVTA service along I-680
- New public survey to support the market and service assessment and action plans

Proposed Budget Amendment

Item	Sam Schwartz	Convey, Inc.	Kimley-Horn	Nelson Nygaard
Budget transfer	\$ 44,441.31			(\$44,441.31)
Incorporation of LAVTA into the ITP	\$ 50,221.20			
Public Survey	\$ 25,000.79	\$ 94,500.00		
Extended project performance period, visioning, and latent demand analysis	\$ 59,449.00		\$ 15,000.00	
TOTAL	\$ 179,112.30	\$ 94,500.00	\$ 15,000.00	\$ (44,441.31)

Total amendment \$ 244,170.99

Original budget \$ 1,801,948.00

New total \$ 2,046,118.99

Staff seeks authorization for the Chair to execute Amendment No. 1 to Agreement No. 630 with Sam Schwartz in the amount of \$244,170.99, for a new total agreement value of \$2,046,118.99, to provide additional work in the development of the countywide ITP.

This Page Intentionally Blank